



OVERALL: Cascade Trail, 4/13/2011, R. Solem.
OVERALL: Cascade Trail, 4/13/2011, R. Solem
OVERALL: Cascade Trail, 4/13/2011, J. Solem.

J	F	M	A	M	J	J	A	S	O	N	D
---	---	---	+	---	---	---	---	---	---	---	---

ID: Brownish rays w/ grayish spore case; closes in dry weather.

Habitat: Solitary/scattered/groups. Sandy soil, may grow on moss.

Fruiting body: 1.5 – 3.5” wide x 0.4 – 1” high [4–9 x 1–2.5 cm]

Outer surface: Yellow-/reddish-brown to grayish/nearly black; rough; breaks into 6 – 12 star-like rays. **Inner surface:** often finely cracked.

Spore case: 0.4 – 1” [1 – 2.5 cm]

Whitish/grayish/grayish-brown. Nearly round/slightly flattened. Somewhat roughened. Single irregular pore.

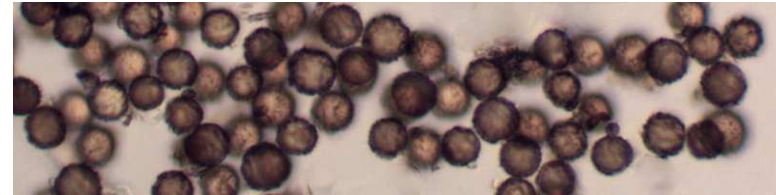
Spores: White (dark brown, powdery in age).

Frequency: Uncommon

Locations: CASCT.

Notes: Mycobank 122550. Specimens in photos 2 & 3 were moved.

References: Bar 91. BBF 451, 458. BBH 323. Bni 339. BRBD 309, 81. E&S 339. Lin 837, 638. M&M 463. Phi 335. Stu 416.



SPORES (9.0-18.8 [round] µm); Cascade Trail, PVSP, 4/14/2011. R. Solem.