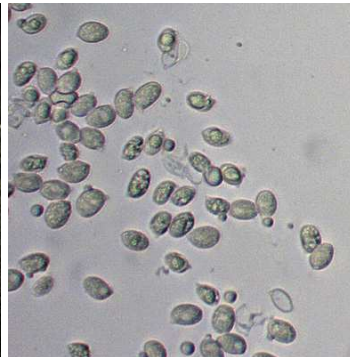


Honey Mushroom

Armillaria gallica
Marxmüller & Romagnesi



OVERALL: Pigtail, 9/25/2009, *J. Solem*.
TOPS (old): Pigtail, 9/25/2009, *J. Solem*.
SIDE (immature): Pigtail, 10/13/2015, *J. Solem*.
GILLS, Pigtail, 10/22/2015, *J. Solem*.
SPORES (8.3-9.0 X 5.8-6.4 μm): Pigtail, 9/25/2009, *R. Solem*.

Honey Mushroom

[*Armillaria gallica*](#)
Ticholomataceae

J	F	M	A	M	J	J	A	S	O	N	D
							---	---+	---++		

ID: Cap tawny-brown, center darker. Stalk lighter w/ olny membranous ring.

Habitat: Solitary, loose custers (*never* cespitose). On/near hardwood trees and stumps (especially oaks); occasionally conifers.

Cap: 1.6" – 2.5" [2 – 6 cm]
Pinkish-/tawny-brown or tan, usually w/ pointed, dark-tipped hairs/scales; margin often has partial veil remnants. Sometimes dry but typically viscid. Convex/nearly flat. Low umbo. Flesh white. Sweet odor.

Gills: Whitish (bruise pinkish/brownish). Subdecurrent.

Spores: *White*. Ellipsoid, smooth

Stalk: 2 – 4" x 0.2 – 0.8" [5 – 10 cm x 0.5 – 1 cm]
Whitish w/ yellow ring zone, cobwebby veil, or membranous ring. Swollen base often stains yellow. Stalk stains red-brown. Abundant black rhizomorphs.

Frequency: Fairly common.

Locations: GONRA, HAMVL, MURHL, MCHPV, PIGTL, ROBNC.

Notes: Mycobank 190066. Morning Choice Trail and Pigtail specimens identified by examination of spores by R. Solem.

Synonym: *A. lutea*; but *Mycobank* says *A. gallica* is the synonym for *A. lutea*.

References: BBF 68fn. BBH 84. Bin 307. Bni 126fn. E&S 135. Kuo. K&M 101. Roo 31fn. Stu 113.