

Blusher

Amanita rubescens complex Persoon



SIDE: High Ridge Park, 6/21/2009, *R. Solem*.
 CAP: Gorman Stream Valley NRA, 8/2/2012, *J. Solem*.
 SIDE: Gorman Stream Valley NRA, 8/2/2012, *J. Solem*.
 RING and GILLS: Pigtail, 8/27/2009, *R. Solem*.
 OVERALL: North Laurel Park, 8/4/2008, *J. Solem*.

Blusher

Amanita rubescens
 Amanitaceae

J	F	M	A	M	J	J	A	S	O	N	D
					+++	+++	+++	+++	+++	---	

ID: Cap tan w/ lighter warts. Stalk white/pale pink; membranous ring; bulb elongate w/ reddish stains. Cap and stalk slowly stain red, then black

Habitat: Scattered, groups. On ground under trees or in grassy areas.

Cap: 1.5 – 8" [4 – 20 cm]

Bronze (light tan) w/ brown/red tints (disc darker). Slowly stains reddish then blackish. Random floccose tan/reddish-tan warts. Dry; sticky when wet. Smooth. Margin white, slightly grooved (or not) w/ remnants of veil. Flesh (12 mm, <= gill layer); white.

Gills: White, often w/ reddish discolorations. Free/finely attached. Crowded. Broad. White/tan partial veil.


Spores: *White*. Ellipsoid, smooth.

Stalk: 3 – 8" x 0.3 – 1.5" [7.5 – 20 cm x 7 – 35 mm]

White/pale pink/tan. Slowly stains reddish. Smooth/floccose; lower stalk infrequently w/ rings of universal veil tissue. Membranous white/pale tan pendant ring. Bulb elongate w/ reddish stains. Solid/stuffed.

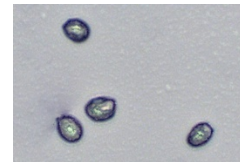
Frequency: Abundant.

Locations: ANNRK, BIGBR, BOLPL, BRNBR, CEDLP, DANPV, FRANF, GONRA, GUILP, HAMVL, HENPV, HIRIP, LONGC, MCHPV, NOLAP, OTHER, PIGTL, RKBRP, ROBNC, ROGOR, SLMLP, SVMLT, WSTRP, WINTR.

Notes:  **Do not taste!** Mycobank 172799. North Laurel Park specimen identified by examination of spores by *R. Solem*.

Section: *Valideae*

References: Bar 240. BBF 66, 274. BBH 56. Bin 31. Bni 31. BRBD 112, 19. E&S 131. K&M 97. Lin 545, 132. M&M 38. Phi 28. Roo 60. Stu 19. W&L 299-300.



SPORES (7.0-7.9 X 5.0-6.1 μm): North Laurel Park, 8/4/2008, *R. Solem*.