

None

Abortiporus biennis
(Bulliard) Singer



SIDES: Beaverbrook, 6/24/2016, R. Orr..



July 6, 2016



July 8, 2016



July 10, 2016



July 12, 2016



July 14, 2016



July 16, 2016

Beaverbrook, R.Orr.

None

Abortiporus biennis
Meruliaceae

J	F	M	A	M	J	J	A	S	O	N	D
				---	---+	+++	+++	---			

ID: Abortive form (more common): Distorted mass of various colors covered with white pores.

Habitat: Scattered, clusters. At bases of stumps and living trees; also on buried roots (especially oak).

Fruiting body: up to 8" [20 cm']
Various colors (whitish/pale brown/reddish-brown). Kidney-shaped/semicircular/irregular. Velvety or bald. Fibrous. **Abortive form** (more common): distorted mass covered with white pores.

Pores: Whitish, bruise reddish-/pinkish-bronze. Angular/maze-like/irregular (1-3 mm). Tubes <= 6mm.

Stalk: If present, up to 2.4" long [6 cm], whitish, velvety.

Spores: White. **Basidiospores:** smooth, ellipsoid, hyaline.

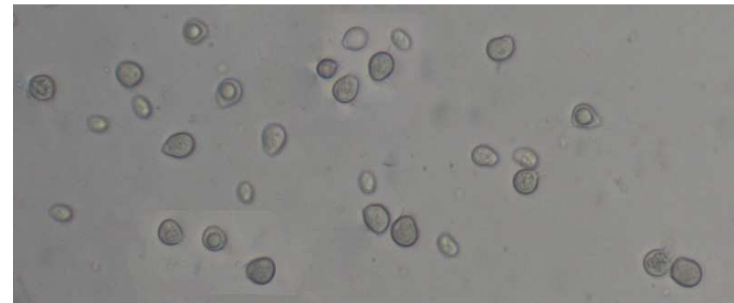
Chlamiospores: thick-walled, nearly round w/ bulge/broken part of stalk, hyaline.

Frequency: Uncommon.

Locations: ORRBB.

Notes: Mycobank 283905. Identification based on examination of chlamydospores by R. Orr.

References: BBH 253. BBSR 304-305. Bni 418. K&M 80. Stu 353. W&L 529-30.



CHLAMYDIOSPORES (6.6-9.0 X 5.4-9.0 µm): Beaverbrook, 7/18/2016. R. Solem.