

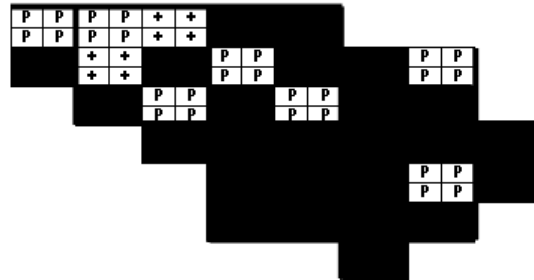
Tufted Titmouse Maps of Howard County BBA Results



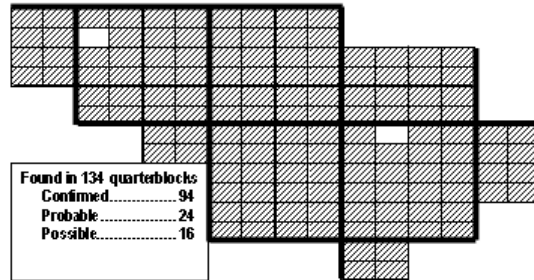
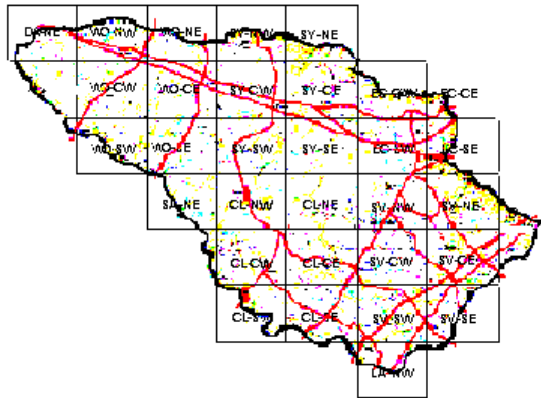
Photo by June Tveekrem



Tufted Titmouse 2002-2006



Tufted Titmouse 1983-1987



Tufted Titmouse 1973-1975

| | |
|----------------------------|----|
| Found in 134 quarterblocks | |
| Confirmed..... | 94 |
| Probable..... | 24 |
| Possible..... | 16 |

Names of Howard County Quadrangles

- DA - Damascus
- WO - Woodbine
- SY - Sykesville
- EC - Ellicott City
- SA - Sandy Spring
- CL - Clarksville
- SV - Savage
- RE - Relay
- LA - Laurel

Blocks within Each Quadrangle

- NW - Northwest
- NE - Northeast
- CW - Center-west
- CE - Center-east
- SW - Southwest
- SE - Southeast

■=Confirmed P=Probable +=Possible o=Observed