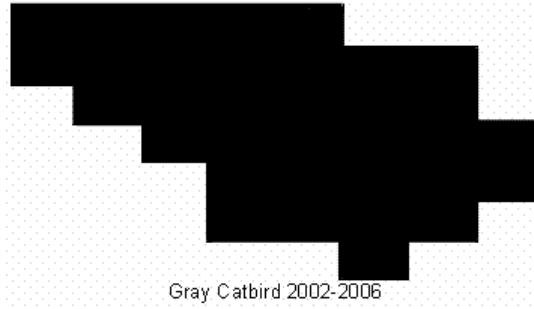


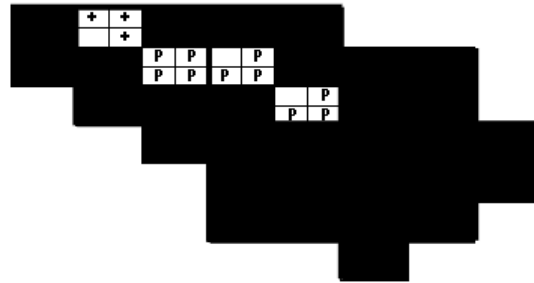
Gray Catbird Maps of Howard County BBA Results



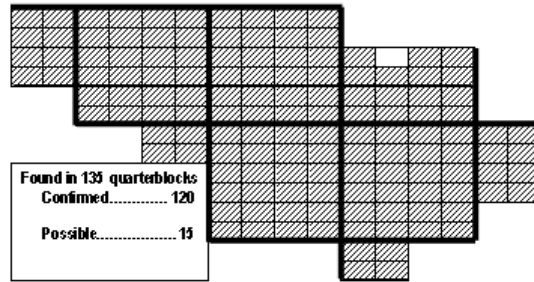
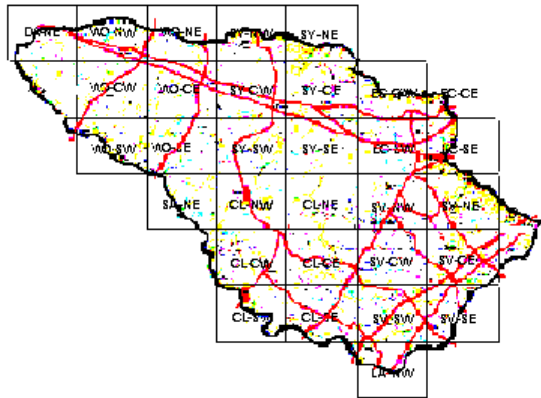
Photo by Ralph Cullison



Gray Catbird 2002-2006



Gray Catbird 1983-1987



Gray Catbird 1973-1975

Found in 139 quarterblocks
 Confirmed..... 120
 Possible..... 15

Names of Howard County Quadrangles

- DA - Damascus
- WO - Woodbine
- SY - Sykesville
- EC - Ellicott City
- SA - Sandy Spring
- CL - Clarksville
- SV - Savage
- RE - Relay
- LA - Laurel

Blocks within Each Quadrangle

- NW - Northwest
- NE - Northeast
- CW - Center-west
- CE - Center-east
- SW - Southwest
- SE - Southeast

■=Confirmed P=Probable +=Possible ○=Observed