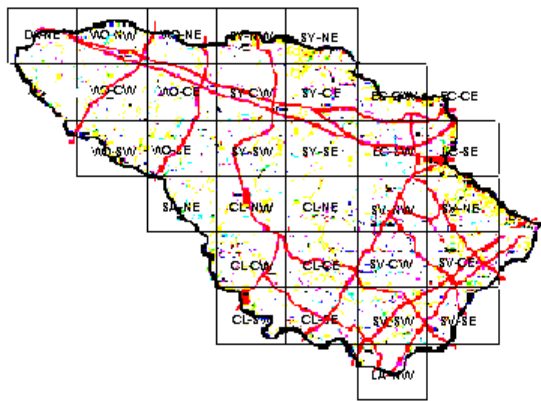


Brown-headed Cowbird Maps of Howard County BBA Results



Photo by Ralph Cullison of parasitized House Finch nest

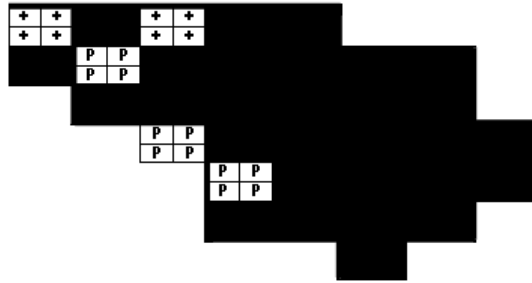


Names of Howard County Quadrangles

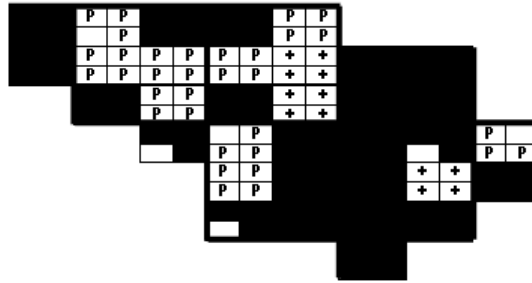
Blocks within Each Quadrangle

- | | |
|--------------------|------------------|
| DA - Damascus | NW - Northwest |
| WO - Woodbine | NE - Northeast |
| SY - Sykesville | CW - Center-west |
| EC - Ellicott City | CE - Center-east |
| SA - Sandy Spring | SW - Southwest |
| CL - Clarksville | SE - Southeast |
| SV - Savage | |
| RE - Relay | |
| LA - Laurel | |

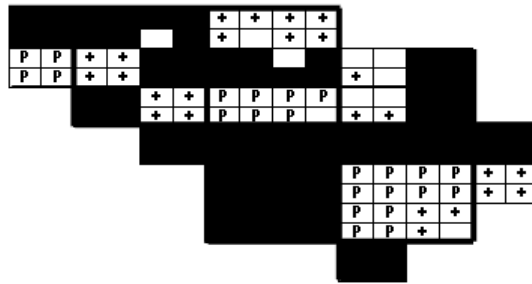
■=Confirmed P=Probable +=Possible ○=Observed



Brown-headed Cowbird 2002-2006



Brown-headed Cowbird 1983-1987



Brown-headed Cowbird 1973-1975