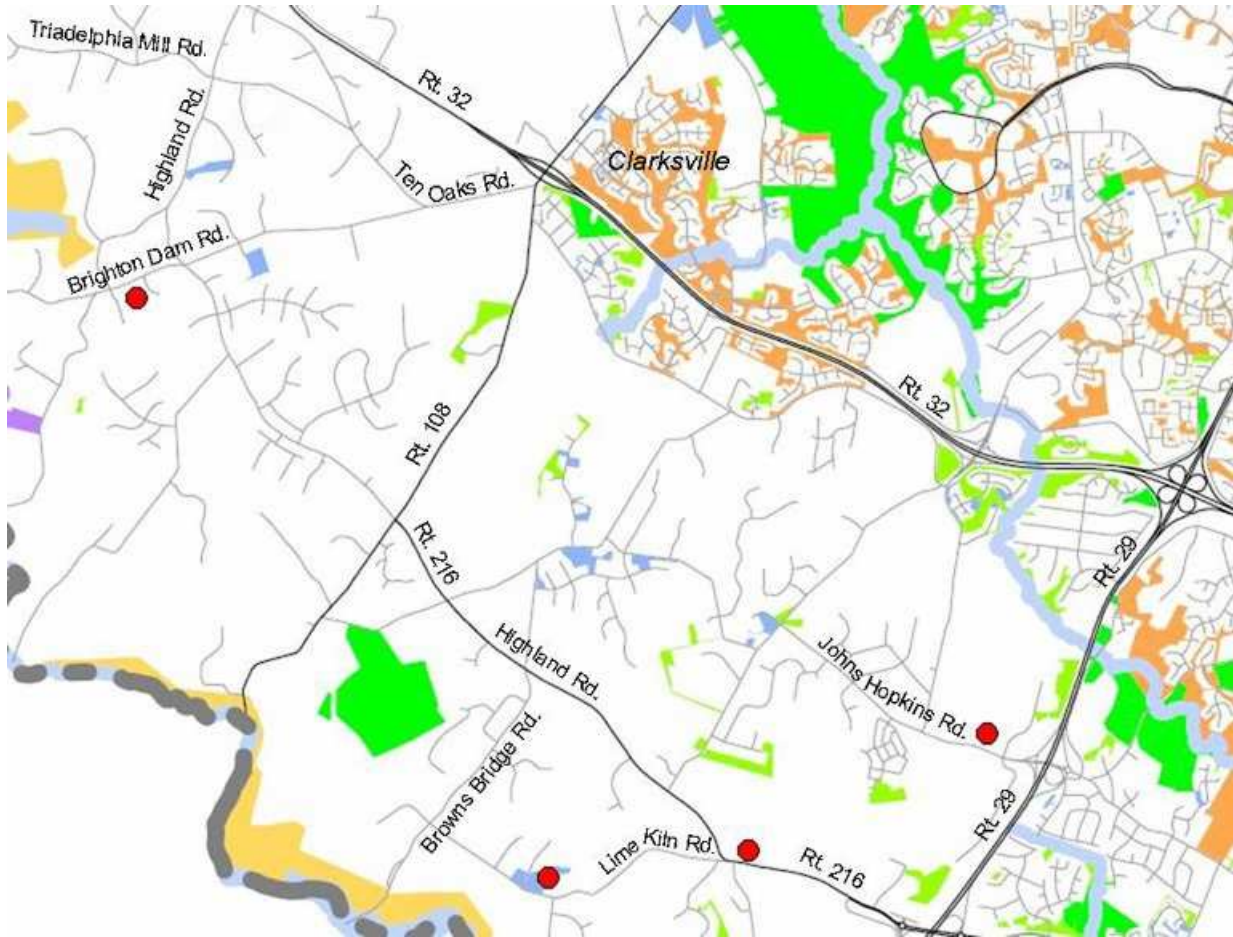


Directions to Southwestern Ponds



JOHNS HOPKINS APPLIED PHYSICS LABORATORY (APL) POND

Location: 0.4 mile west of US 29 on Johns Hopkins Road. Turn right just before reaching the pond. Park in the credit union parking lot and scan through the metal bars of the fence.

FULTON POND

Location: 1.1 miles west of US 29 on MD 216. To view Fulton Pond, park either on the wide shoulder on the north side of MD216 (in front of fenced Fulton Elementary School, or on weekends and holidays use the school parking lot. **Do not stop in the farm driveway or walk on farm property.** To view the pasture, continue west to the Fulton Post Office parking lot on the west side of the road.

LIME KILN ROAD POND

Location: North of the intersection of Lime Kiln and Reservoir Roads, reached from MD 216 by driving 1.1 miles west on Lime Kiln Road from Fulton (just west of St. Paul's Church). Stopping along Lime Kiln Road is dangerous. Park on Reservoir Road facing the pond.

NICHOL'S QUARRY POND

Location: From MD 108 South in Clarksville, go past the intersection with MD 32 and make a right turn (west) at the first street which is Ten Oaks Road. Go 0.6 mile to its junction with Brighton Dam Road (straight ahead) and continue 1.4 miles. At the four-way stop, which is Highland Road, continue straight another 0.5 mile to a left on Springdale Drive. Go to the cul de sac which is the highest point of public access. Park there or along the road (not on the grass). It is necessary to peer between the houses and landscaping on the east side of the road.